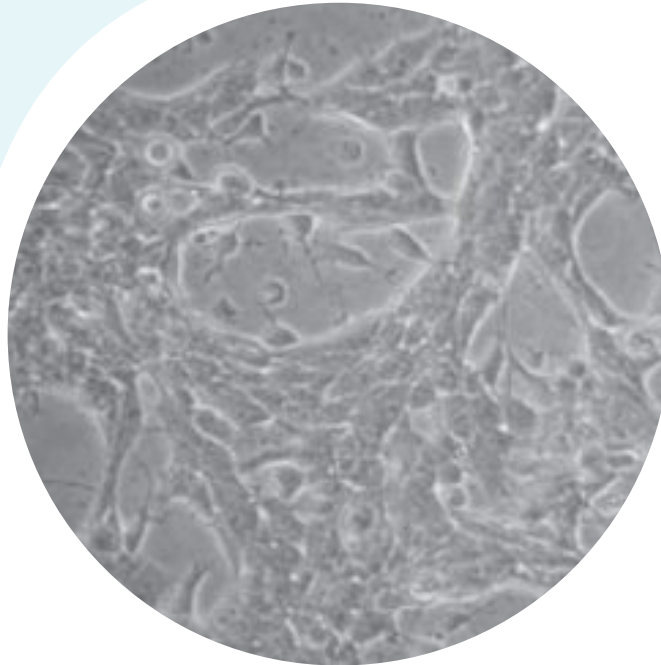


ANS-1



DESCRIPTION

NEURAL STEM CELLS DERIVED FROM ADULT MURINE SUBVENTRICULAR ZONE (SVZ)

Organism:	<i>Mus musculus</i> , mouse
Cell Type:	Neural stem cell
Source:	SVZ (subventricular zone) of a 2-month-old wild-type mouse (CD1 strain)
Datasheet:	available under request

REFERENCES

1. Pollard SM, Conti L, Sun Y, Goffredo D, Smith A. Adherent neural stem (NS) cells from fetal and adult forebrain. *Cereb Cortex*. 2006 Jul;16 Suppl 1:i112-20.
2. Goffredo D, Conti L, Di Febo F, Biella G, Tosoni A, Vago G, Biunno I, Moiana A, Bolognini D, Toselli M, Cattaneo E. Setting the conditions for efficient, robust and reproducible generation of functionally active neurons from adult subventricular zone-derived neural stem cells. *Cell Death Differ*. 2008 Dec;15(12):1847-56.
3. Garavaglia A, Moiana A, Camnasio S, Bolognini D, Papait R, Rigamonti D, Cattaneo E. Adaptation of NS cells growth and differentiation to high-throughput screening-compatible plates. *BMC Neurosci*. 2010 Jan 19;11:7.