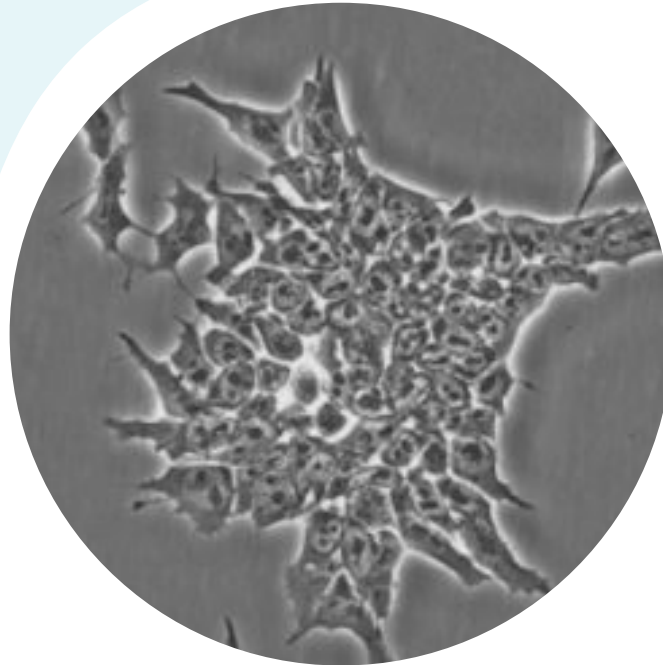


ES46C



DESCRIPTION

SOX1-GFP (GENETICALLY ENGINEERED) KNOCK-IN MURINE EMBRYONIC STEM CELL LINE OBTAINED FROM THE E14TG2A.IV CELL LINE

Organism:	<i>Mus musculus</i> , mouse
Cell Type:	Embryonic stem cell
Source:	E14Tg2a.IV cells (strain 129P2/Ola Hsd)
Datasheet:	available under request

REFERENCES

1. Ying QL, Stavridis M, Griffiths D, Li M, Smith A. Conversion of embryonic stem cells into neuroectodermal precursors in adherent mono-culture. *Nat Biotechnol.* 2003 Feb;21(2):183-6.
2. Cardano M, Diaferia GR, Cattaneo M, Dessi SS, Long Q, Conti L, Deblasio P, Cattaneo E, Biunno I. mSEL-1L (Suppressor/enhancer Lin12-like) protein levels influence murine neural stem cell self-renewal and lineage commitment. *J Biol Chem.* 2011 May 27;286(21):18708-19.