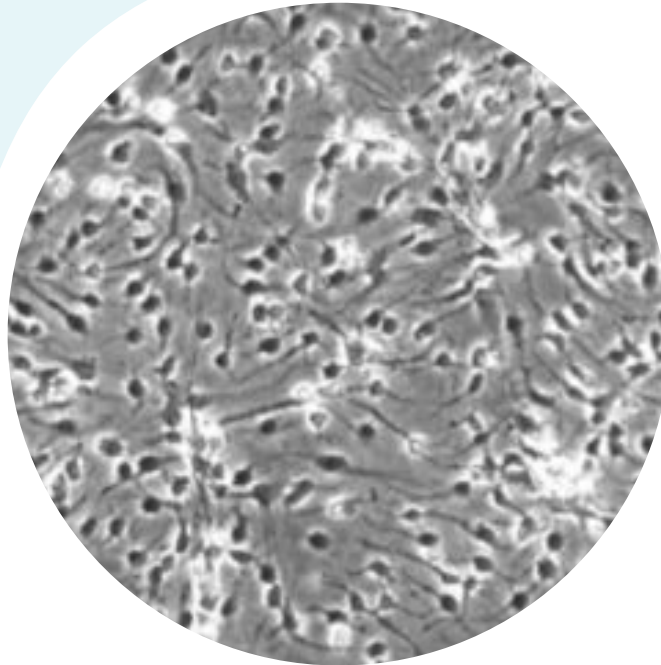


NS46C OR LC1



DESCRIPTION

NEURAL STEM CELLS DERIVED FROM MURINE EMBRYONIC STEM CELLS ES46C

Organism:	<i>Mus musculus</i> , mouse
Cell Type:	Neural stem cell
Source:	Embryonic stem cell line ES46C
Datasheet:	available under request

REFERENCES

1. Conti L, Pollard SM, Gorba T, Reitano E, Toselli M, Biella G, Sun Y, Sanzone S, Ying QL, Cattaneo E, Smith A. Niche-independent symmetrical self-renewal of a mammalian tissue stem cell, *PLoS Biol.* 2005 Sep;3(9):e283.
2. Garavaglia A, Moiana A, Camnasio S, Bolognini D, Papait R, Rigamonti D, Cattaneo E. Adaptation of NS cells growth and differentiation to high-throughput screening-compatible plates. *BMC Neurosci.* 2010 Jan 19;11:7.
3. Cusulin C, Monni E, Ahlenius H, Wood J, Brune JC, Lindvall O, Kokaia Z. Embryonic stem cell-derived neural stem cells fuse with microglia and mature neurons. *Stem Cells.* 2012 Dec;30(12):2657-71.