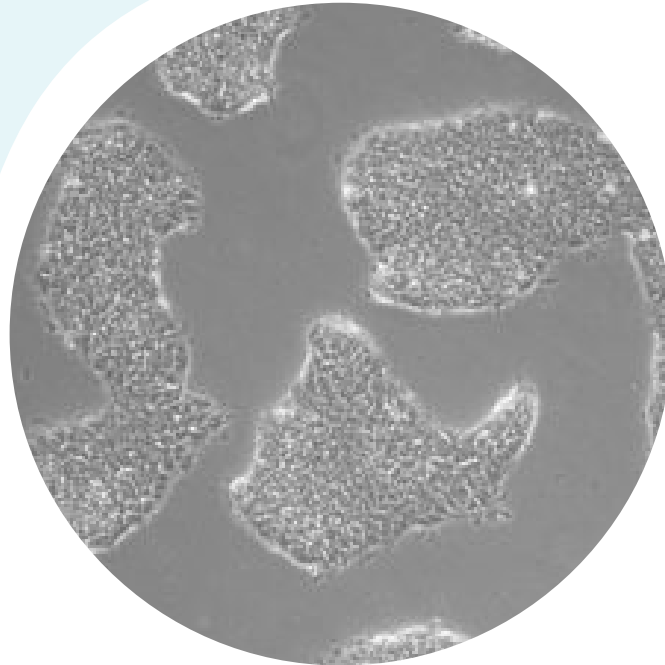


MS-HIPS RR16#5



DESCRIPTION

INDUCED PLURIPOTENT STEM CELLS DERIVED FROM HUMAN MULTIPLE SCLEROSIS FIBROBLASTS

Organism:	<i>Homo sapiens</i> , human
Cell Type:	Induced pluripotent stem cells
Source:	Fibroblasts
Gender:	Female
Age:	36 year-old
Disease:	Multiple Sclerosis
Family member:	2
Relation to proband:	Twin
Delivery system:	infection with Sendai virus
Reprogramming factors:	Oct4, Klf4, Sox2, cMyc
Datasheet:	available under request

REFERENCES